

## BELGRAVE ROAD, WANSTEAD

### Offers In Excess Of £1,250,000 Freehold

### 4 Bed House - End Terrace



#### Features:

- Edwardian End Terrace House
- Four Bedrooms
- Sought after Lake House Estate
- Beautiful Original Features
- Cellar
- Potential to extend STP
- Side Access
- Landscaped Mature Garden
- Close to Wanstead Heath and Wanstead Park

Nestled between Wanstead Park and Wanstead Flats, in Aldersbrook's much sought-after Lake House Estate, this classically beautiful four-bedroom end-of-terrace Edwardian home is rich in charm and character.

Spanning 1569 square feet, it offers multiple reception rooms, a cellar, ground floor WC and a first floor bathroom, along with a mature landscaped garden with side access. There's also exciting potential to extend further (subject to the usual permissions). Storage is plentiful throughout, and you're within easy walking distance of Leytonstone station.

The area is particularly popular with families, thanks to its strong sense of community, well-regarded schools and abundance of nearby green space.

REQUEST A VIEWING  
0203 397 2222

**E11, E7, E12 & E15**  
hello11@stowbrothers.com  
0203 397 2222

**E4 & N17**  
hello4@stowbrothers.com  
0203 369 6444

**E17 & E10**  
hello17@stowbrothers.com  
0203 397 9797

**E18 & IG8**  
hello18@stowbrothers.com  
0203 369 1818

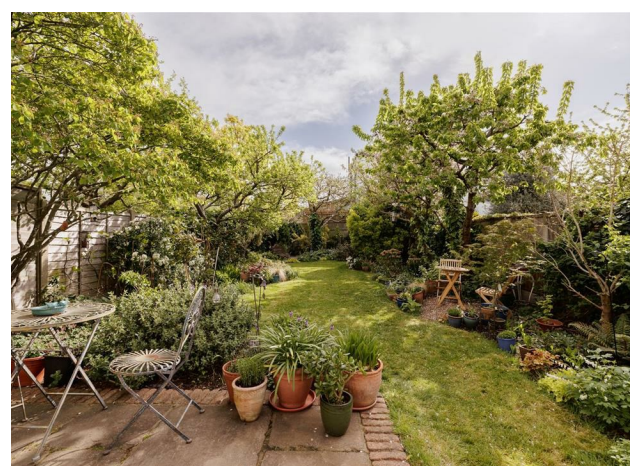
**E8, E9, E5, N16, E3 & E2**  
hellohackney@stowbrothers.com  
0208 520 3077

**New Homes**  
newhomes@stowbrothers.com  
0203 325 7227

**Investment & Development**  
id@stowbrothers.com  
0208 520 6220

**Property Maintenance**  
propertymanagement@stowbrothers.com  
0203 325 7228

STOWBROTHERS.COM  
@STOWBROTHERS



IF YOU LIVED HERE...

From the moment you arrive, the charming frontage makes a striking first impression, setting the tone for what lies beyond. Step inside and you'll find a home where classic period features and tasteful decor sit effortlessly side by side, creating a warm and welcoming atmosphere.

The front reception is beautifully proportioned, with a bay window drawing in plenty of natural light and highlighting the elegant period detail.

Moving through, the dining room offers a wonderful setting for entertaining, with a natural flow into the conservatory at the rear. Here, garden views and soft light create a calm feel, making it an ideal spot for formal dining.

Adjacent, the breakfast room and kitchen are thoughtfully arranged, offering plenty of space for cooking, dining and gathering. The layout works brilliantly for family life, and there's obviously scope for redesign too. A ground floor WC adds extra convenience, and the cellar provides useful additional storage.

Upstairs, the first floor hosts four well-proportioned bedrooms, each finished with the same attention to detail and understated style - you'll love the storage in the master. The family bathroom is centrally placed and contemporary, with

a handy separate WC.

Outside, the garden is bursting with mature foliage, giving a brilliant secluded feel.

As for what's beyond your front door, the Aldersbrook neighbourhood is renowned for its rare blend of rural charm and proximity to central London. You've got Aldersbrook Riding School and Bowls Club for instance.

To the north lies Wanstead Park, a much-loved community space and historic landmark, while to the south, you'll find the Wanstead Flats, the southernmost tip of Epping Forest.

WHAT ELSE?

- As well as having Leytonstone station 0.8 miles away for the Central line, you've got Leytonstone High Road a similar distance for the Suffragette Overground.
- Drivers benefit from being just 15 minutes from the North Circular.
- Parents will be pleased to know you have a choice of excellent primary/secondary schools in the area, one of the main reasons the area is so popular.



A WORD FROM THE OWNER...

"This house and garden have always lived up to my slightly theatrical and definitely musical family. It seems to have loved a bit of set dressing, over the top but tasteful Christmas decorations and music from every room and in every style. It has been my pleasure, my sanctuary and knows how to play to my moods. I love the area and how easily accessible everything is, so deciding to find something smaller has been very hard but probably sensible. I am sure there are people waiting who will make it their own and enjoy it as much as I have."

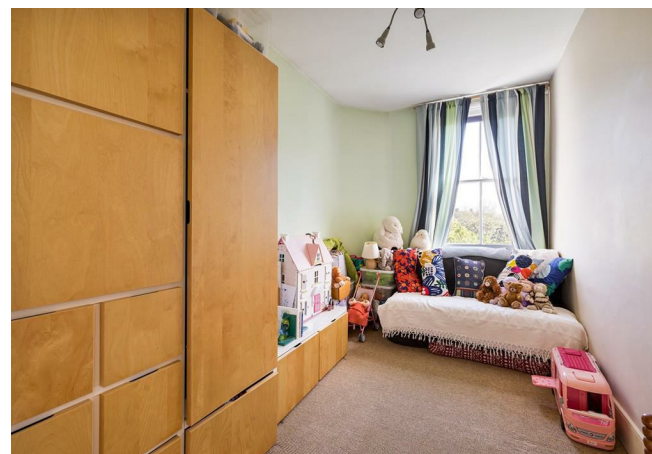
REQUEST A VIEWING  
0203 397 2222

FOLLOW US → @STOWBROTHERS  
STOWBROTHERS.COM



REQUEST A VIEWING  
0203 397 2222

FOLLOW US → @STOWBROTHERS  
STOWBROTHERS.COM



**Sitting Room**  
15'4" x 16'0"

**Downstairs WC**

**Dining Room**  
11'3" x 14'10"

**Conservatory**  
9'7" x 8'2"

**Breakfast Room**  
10'7" x 11'0"

**Kitchen**  
7'5" x 12'0"

**Upstairs WC**

**Bathroom**  
6'10" x 8'0"

**Bedroom**  
7'6" x 11'11"

**Bedroom**  
12'0" x 13'10"

**Bedroom**  
13'6" x 17'0"

**Bedroom**  
8'5" x 10'3"

**Cellar**  
7'7" x 13'0"

**Garden**  
approx 24'3" x 65'7"



REQUEST A VIEWING  
0203 397 2222

FOLLOW US → @STOWBROTHERS  
STOWBROTHERS.COM